

*Giving corporate PC users cost-effective access to the data and applications on host systems.*

# SMARTERM ESSENTIAL

FOR WINDOWS 95/NT

## **Superior Emulation for Access to Host Data**

For years, users around the world have chosen SmarTerm for its superior emulation, connecting them to the vital data on host systems. Whether data resides on IBM, UNIX, or Digital hosts, SmarTerm provides the most precise emulation for access. With SmarTerm Essential, you get your choice of emulation for AS/400s, IBM mainframes, or UNIX/Digital hosts.

## **High-Performance Connections Using Today's Protocol Standards**

SmarTerm enhances the connectivity choices you've made. SmarTerm includes support for Microsoft SNA Server and Novell NetWare for SAA with the IBM emulation options. It also supports the industry-standard VxD TCP/IP protocol stack provided free in the Windows 95 and Windows NT operating systems. Plus SmarTerm supports 32-bit Windows Sockets TCP/IP stacks available from other vendors. For LAT users, Persoft offers an optional package of SuperLAT for Windows 95/NT and supports PATHWORKS for Windows 95 LAT. For remote users, SmarTerm provides full TAPI support, a Windows 95 feature, that provides a way for applications to support telephone communication.

## **Save Time and Money: Automate and Integrate**

SmarTerm is Microsoft Office 97 and "Designed for Windows 95 and Windows NT" compatible, reducing your training and support costs by providing a familiar look and feel of other popular PC applications. In addition, SmarTerm includes pioneering user automation tools, designed to increase productivity and reduce support costs and time. SmarTerm includes a powerful SmarTerm Toolbox to automate every day activities. It includes a VB-compatible macro language and recorder to automate common activities such as host logins and file transfers. You can assign these macros to SmarTerm Buttons for common activities. SmarTerm also includes SmartMouse®, a unique tool that allows you to use the mouse in host applications that traditionally do not support mouse actions.

With SmarTerm, file transfers are easy. SmarTerm allows you to choose between a Windows-based, drag-and-drop interface and a command-line interface for transferring files. All file transfers are fully scriptable, giving you the power to automate your everyday tasks.

SmarTerm's pop-up VT, IBM 5250, IBM 3270, and WYSE keyboards can be used to interact with host applications. These keyboards help you easily remember how PC keys are mapped for host applications, or you can

use the graphical, point-and-click keyboard remapping utility.

Save time by taking advantage of SmarTerm's integration features. You can share information applications running on UNIX, IBM, and Digital hosts with the PC applications you use everyday by using macros, OLE 2.0 drag-and-drop, DDE links, and copy/paste to the clipboard.

## **Connect in Your Language**

If you have hosts operating in multiple countries or have users with different language needs, SmarTerm provides your solution all in one box. SmarTerm provides simultaneous connectivity sessions in English, French, German, and Spanish. Each session provides menus, tooltips, and a help system in the user-defined language.

## **Free Technical Support**

Whether before or after you purchase SmarTerm, we will provide the technical support you need in today's complicated networking environments. SmarTerm's technical support is free. . .not just 90 days like some connectivity packages. Regardless of your location, you can count on Persoft's multilingual technical support departments for free telephone technical support. If you prefer on-line support, try our technical support through our e-mail, anonymous FTP server, BBS, or our WWW page.

# SPECIFICATIONS

# SMARTERM<sup>®</sup> Essential

Version 7.0

## Integrated Installation

- Your choice of one of the following: IBM 3270; IBM5250; or VT420, ANSI, SCO ANSI, and WYSE
- Multilingual (English, French, German, and Spanish)
- Support for server and single-user installation

## Emulations

Your choice of one of the following:

- Precise, multilingual IBM 5250, including IBM 3477-FC, 3477-FG, 3180-2, 3179-2, 3196-A1, 5292-2, 5291-1, 5251-11
- Precise, multilingual IBM 3270, including IBM 3278 levels 2 through 5 and IBM 3279 levels 2 and 3 with extended attribute support; IBM 3287 printer emulation
- Precise, multilingual VT420, VT320, VT220, VT102, VT101, VT100, and VT52 emulation with full 132-column display; WYSE 50/60; ANSI and SCO ANSI

## Connectivity

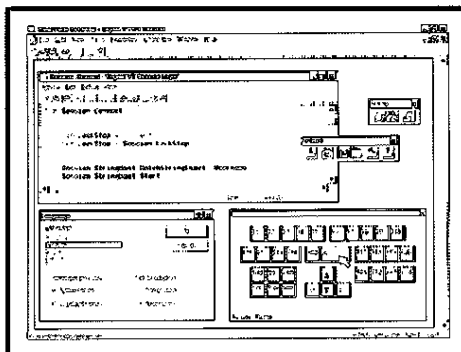
- Supports up to 16 simultaneous sessions
- Telnet support for 32-bit Windows Sockets-compliant TCP/IP stacks in Windows 95 and Windows NT operating systems and from other vendors
- TN3270E
- Microsoft SNA Server v. 2.11 or 3.0 and Novell NetWare for SAA v. 2.2 (with IBM 3270 or IBM 5250 option)
- Drag-and-drop FTP client
- Support for SuperLAT (available as an optional package from Persoft) and PATHWORKS for Windows 95 LAT
- Full TAPI support for modems
- CEO Workstation support
- Serial support

## Internet/Intranet Tools

- Internet/Intranet aware for site hyperlinks and email

## File Transfer

- Drag-and-drop FTP interface
- Command-line FTP interface
- FTP File Viewer, allowing users to view files



SmarTerm Essential offers cost-effective access to the data and applications on host systems.

- Integrated stand-alone FTP client with support for long file names
- Kermit, XMODEM, YMODEM, and ZMODEM error-free file transfer
- IND\$FILE (with IBM 3270 option)

## SmarTerm Toolbox

- Powerful VB-compatible macro language, recorder, editor, and debugging facility
- Auto-startup macros
- SmarTerm Buttons and palette editor to automate common activities
- SmartMouse for mouse use in host applications that do not support mouse actions
- OLE 2.0 automation
- DDE client and server
- Application toolbars
- Host control
- Two-way trace

## Ease-of-Use Features

- Integrated user interface
- True MDI interface
- Graphical, point-and-click keyboard remapping
- Adjustable, pop-up IBM 5250, IBM 3270, VT, and WYSE keyboards
- Phonebook
- On-line help (including "What's This" help) and user-definable help
- Full MAPI support
- Copy/paste to clipboard

## International Support

- Multilingual install (English, French, German, and Spanish)
- Simultaneous multilingual emulation (English, French, German, and Spanish)
- VT compose character support
- Full support of Digital multinational characters, ISO Latin-1, ISO Latin-2, and 7-bit National Character Sets
- Remappable keyboard for international versions of Windows 95 and Windows NT

## Requirements

- 80486 or Pentium PC
- 8 Mb of memory
- Microsoft Windows 95 or Windows NT version 3.51 or higher

## Technical Support

- Free
- Telephone: (608)273-HELP (608-273-4357) or +44 (0)1235 831122 in Europe
- Email: [support@persoft.com](mailto:support@persoft.com)
- Anonymous FTP server: <ftp.persoft.com>
- BBS: (608)273-6595
- WWW page: [www.persoft.com](http://www.persoft.com)



Information Pathways to the Future

Persoft, Inc., 465 Science Dr., P.O. Box 44953, Madison, WI 53744-4953, USA, tel: (608)273-6000, fax: (608)273-8227  
email: [sales@persoft.com](mailto:sales@persoft.com), [www.persoft.com](http://www.persoft.com), 1-800-368-5283 or 1-800-TCP-3130, Persoft fax reply: (608)273-6090

Persoft Inc European Headquarters, 71 Milton Park, Abingdon, Oxfordshire, OX14 4RX, United Kingdom  
email: [euro\\_info@persoft.com](mailto:euro_info@persoft.com), tel: +44 (0)1235 831122, fax: +44 (0)1235 831133